



Al Alwan Villa

BASEMENT FLOOR

Table of Contents

Cover	1
Table of Contents	2
Images	3

Product data sheets

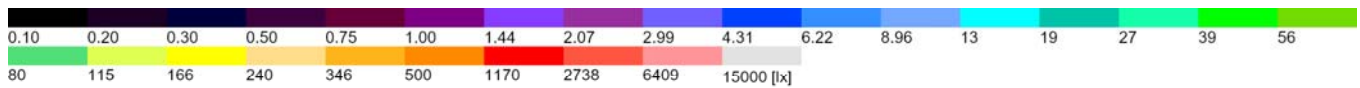
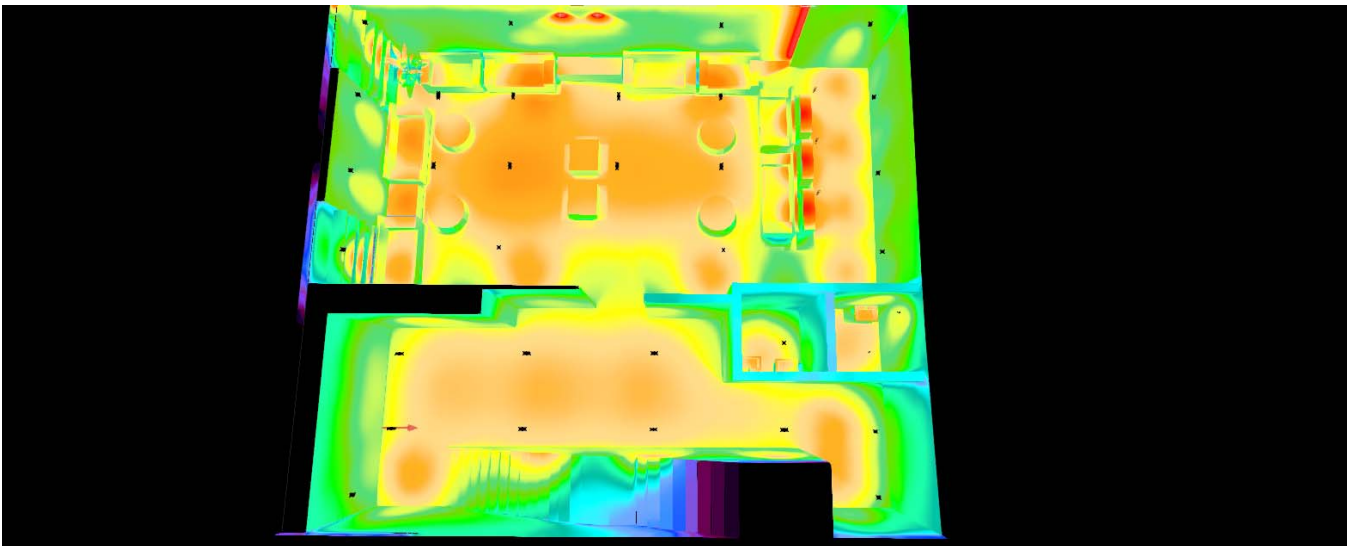
NEKO - LED-Lamps (1x LED CLLE 8W-3000K/120°)	8
NEKO - LED-Lamps (1x SL2835A/IP20 6W 500mm 3000K)	9
NEKO - LED-Multiple DownLight (1x TSA1D 15W BB 3000K 60°, 1x TSA1D 15W BB 3000K 60°)	10
NEKO - LED-SpotLight (1x CLUB TSA3 M4 15W 35°3000K BBM)	11
NEKO - LED-SpotLight (1x MINUX 44 WC 11W 40°3000K)	12
NEKO - LED-Spotlight (1x MIU-PS WB 11W-3000K/36°930)	13

Jellyfish Al Alwan Villa - Building 1 - BASEMENT FLOOR

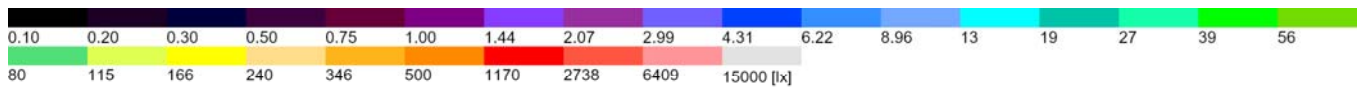
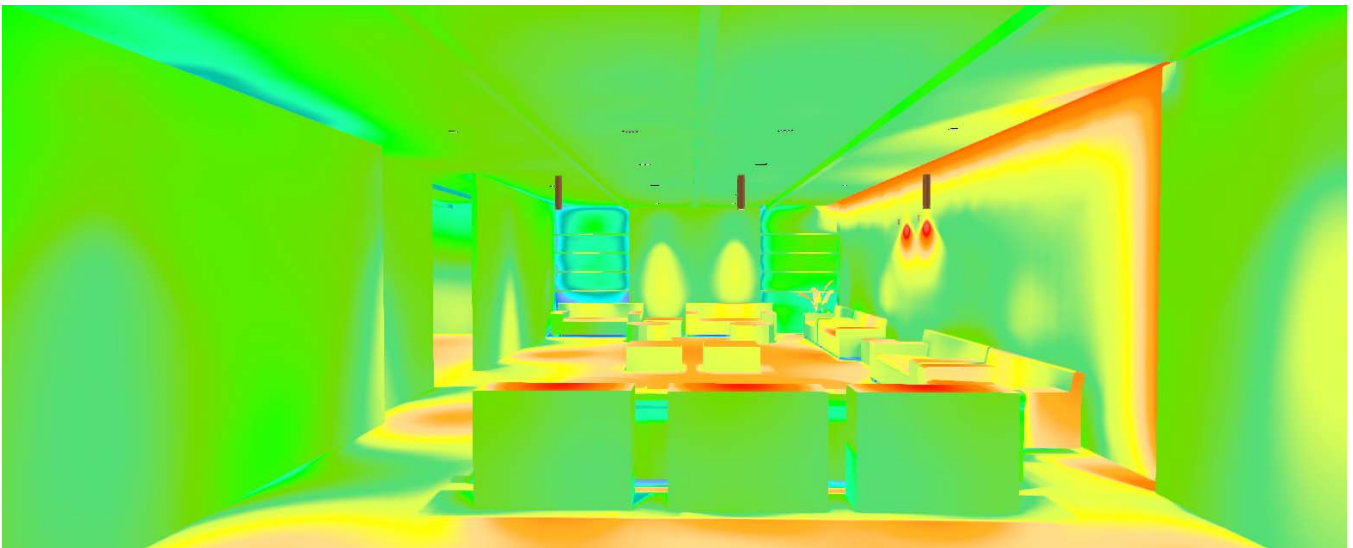
Room 1

Summary / Light scene 1	14
Calculation objects / Light scene 1	16
LIVING / Light scene 1 / Perpendicular illuminance	18
STUDY / Light scene 1 / Perpendicular illuminance	19

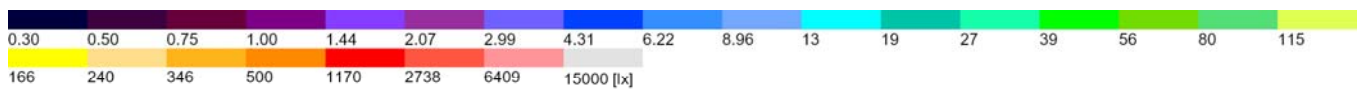
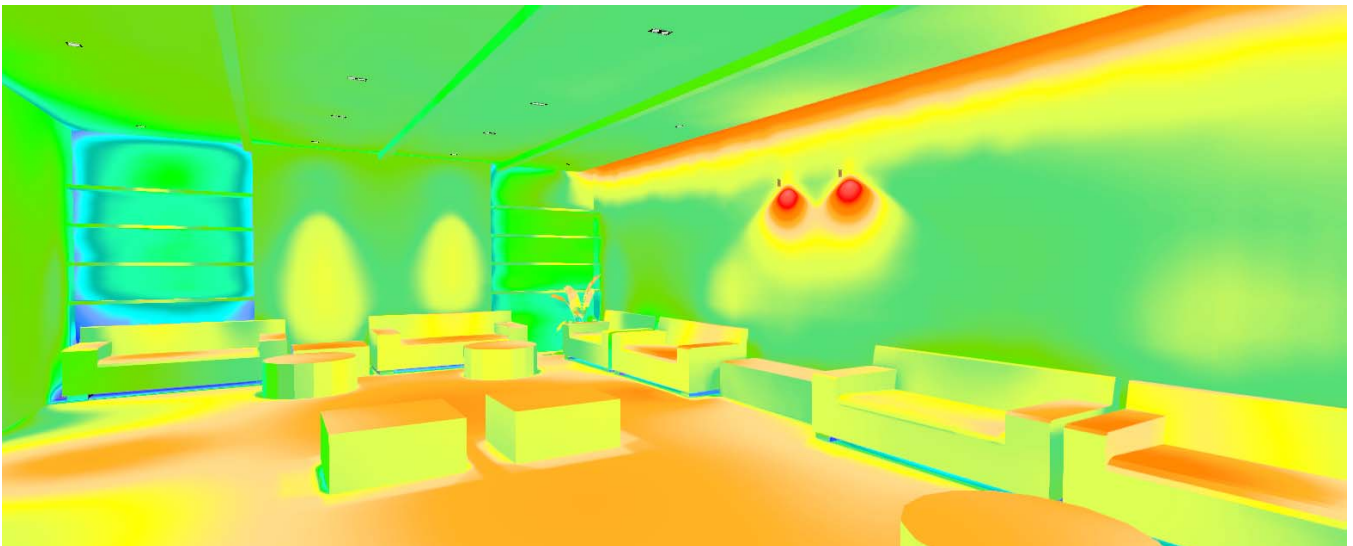
Images



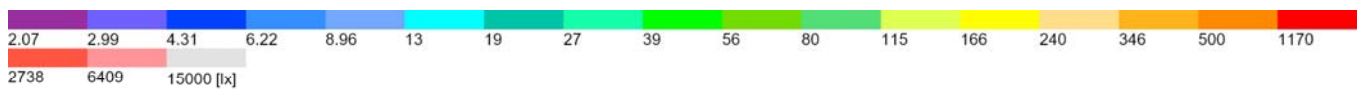
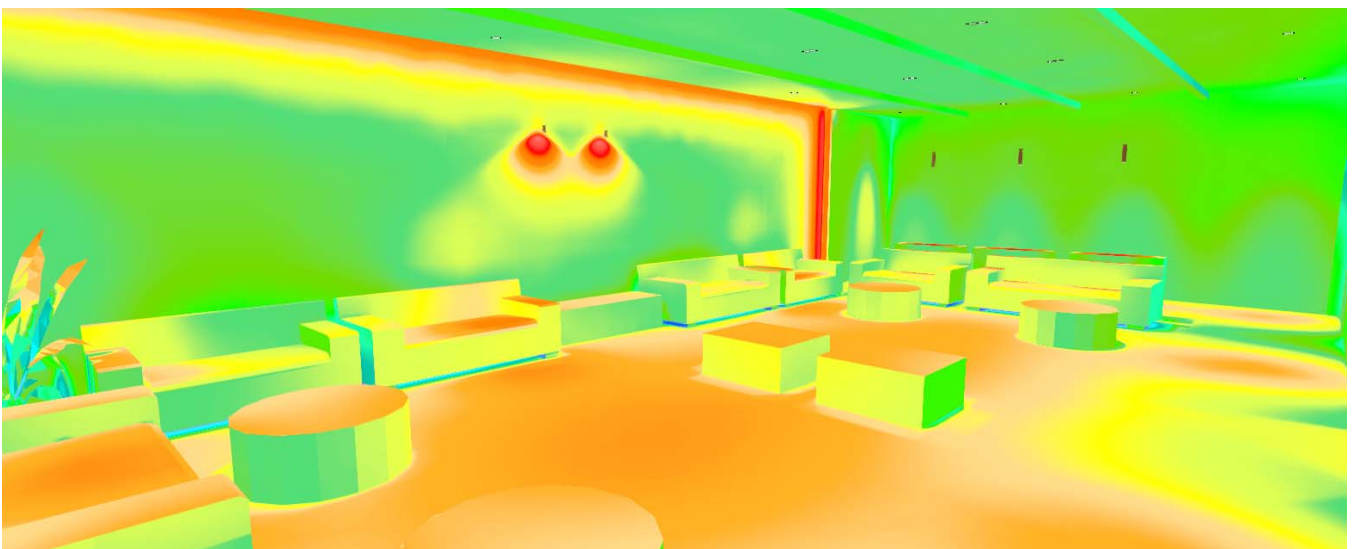
Images



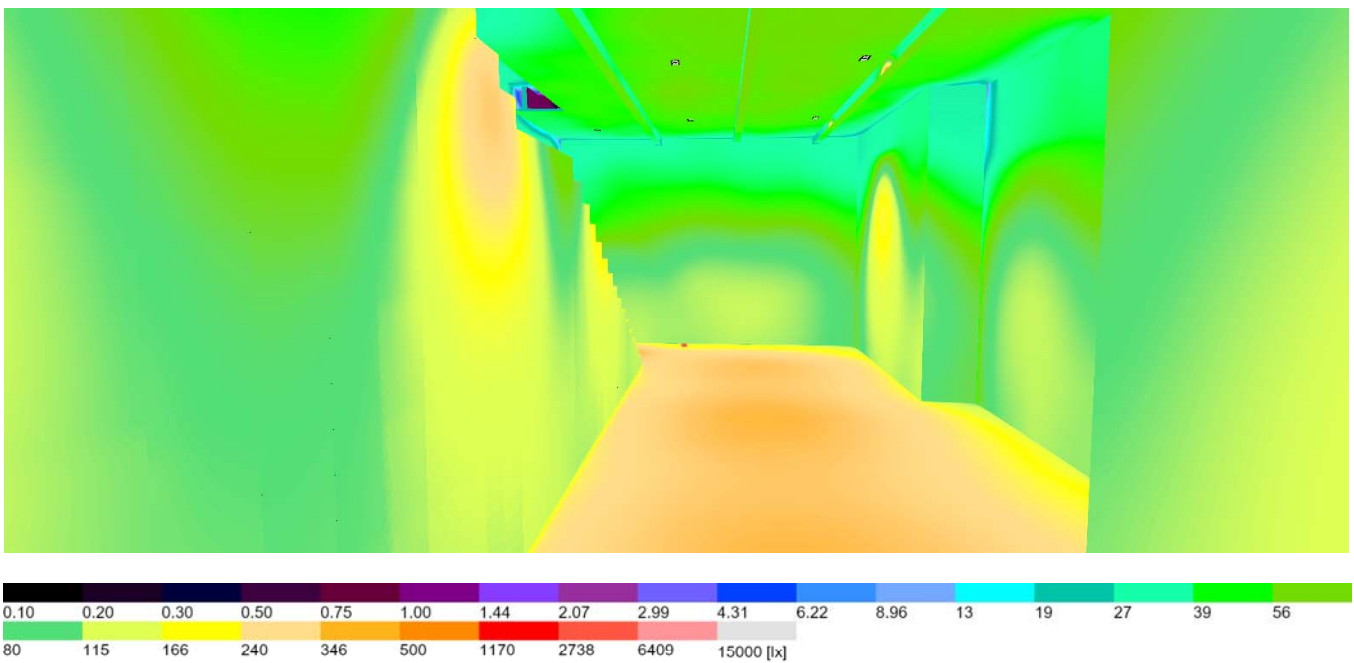
Images



Images



Images



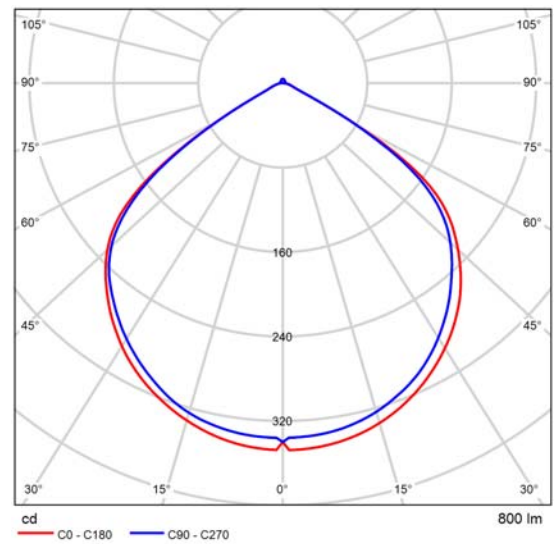
Product data sheet

NEKO - LED-Lamps



Article No.	LED CLLE 8W-3000K/120°
P	8.0 W
$\Phi_{\text{Luminaire}}$	800 lm
Luminous efficacy	100.0 lm/W
CCT	3000 K
CRI	90

Description



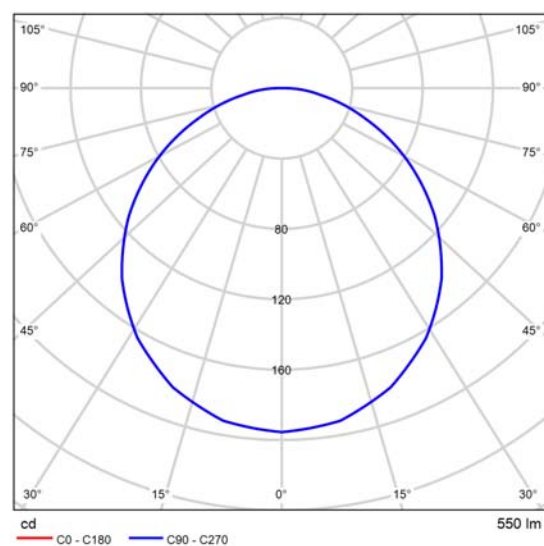
Polar LDC

Product data sheet

NEKO - LED-Lamps



Article No.	SL2835A/IP20 6W 500mm 3000K
P	6.0 W
$\Phi_{\text{Luminaire}}$	550 lm
Luminous efficacy	91.7 lm/W
CCT	3000 K
CRI	90



Polar LDC

Specification

Glare evaluation according to UGR												
μ Ceiling		70	70	50	50	30	70	70	50	50	30	
μ Walls		50	30	50	30	30	50	30	50	30	30	
μ Floor		20	20	20	20	20	20	20	20	20	20	
Room size X Y		Viewing direction at right angles to lamp axis					Viewing direction parallel to lamp axis					
2H	2H	23.2	24.6	23.5	24.8	25.0	23.8	25.2	24.1	25.4	25.7	
	3H	24.5	25.7	24.8	26.0	26.2	25.3	26.6	25.6	26.8	27.1	
	4H	24.9	26.1	25.3	26.4	26.7	25.9	27.1	26.3	27.4	27.7	
	6H	25.3	26.3	25.6	26.7	27.0	26.4	27.5	26.8	27.8	28.1	
	8H	25.3	26.4	25.7	26.7	27.0	26.6	27.6	27.0	28.0	28.3	
	12H	25.4	26.4	25.8	26.7	27.1	26.7	27.8	27.1	28.1	28.4	
4H	2H	23.8	25.0	24.2	25.3	25.6	24.3	25.5	24.7	25.8	26.1	
	3H	25.3	26.3	25.7	26.6	27.0	26.0	27.0	26.4	27.3	27.7	
	4H	25.9	26.8	26.3	27.1	27.5	26.7	27.6	27.1	28.0	28.4	
	6H	26.3	27.1	26.7	27.5	27.9	27.3	28.1	27.8	28.5	28.9	
	8H	26.4	27.2	26.9	27.6	28.0	27.6	28.3	28.0	28.7	29.1	
	12H	26.5	27.2	27.0	27.6	28.1	27.8	28.5	28.2	28.9	29.3	
8H	4H	26.2	26.9	26.6	27.3	27.7	26.9	27.7	27.4	28.1	28.5	
	6H	26.7	27.3	27.2	27.7	28.2	27.6	28.2	28.1	28.7	29.1	
	8H	26.9	27.4	27.4	27.9	28.4	28.0	28.5	28.4	28.9	29.4	
	12H	27.1	27.5	27.6	28.0	28.5	28.3	28.7	28.7	29.2	29.7	
12H	4H	26.2	26.9	26.6	27.3	27.7	26.9	27.6	27.4	28.0	28.5	
	6H	26.8	27.3	27.2	27.7	28.2	27.7	28.2	28.1	28.7	29.1	
	8H	27.0	27.5	27.5	27.9	28.4	28.0	28.5	28.5	29.0	29.5	
Variation of the observer position for the luminaire distances S												
S = 1.0H		+0.1 / -0.2					+0.1 / -0.1					
S = 1.5H		+0.3 / -0.5					+0.2 / -0.3					
S = 2.0H		+0.5 / -0.9					+0.5 / -0.6					
Standard table		BK05					BK06					
Correction summand		9.6					11.0					
Corrected glare indices referring to 550lm Total luminous flux												

UGR diagram (SHR: 0.25)

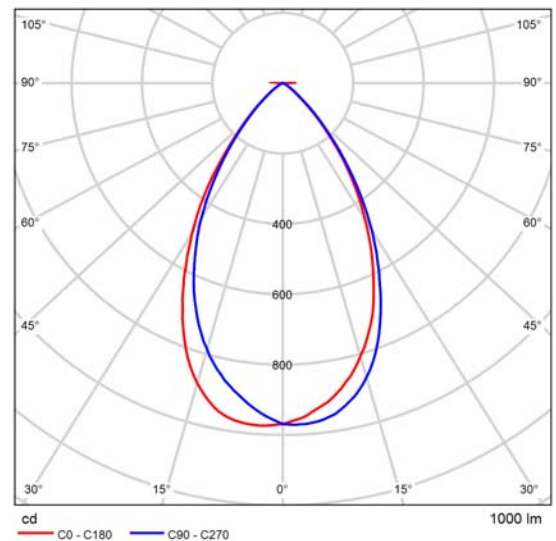
Product data sheet

NEKO - LED-Multiple DownLight



Article No.	TSA1D 2×15W BB 3000K 60°
P	30.0 W
$\Phi_{\text{Luminaire}}$	2000 lm
Luminous efficacy	66.7 lm/W
CCT	3000 K
CRI	90

Specification



Polar LDC for Light emission 1 and 2

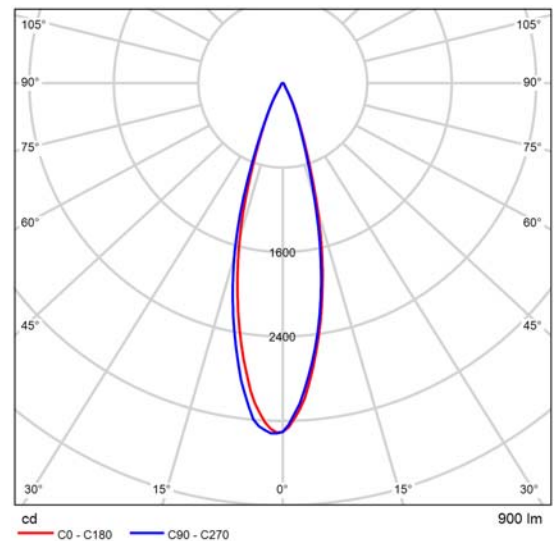
Product data sheet

NEKO - LED-SpotLight



Article No.	CLUB TSA3 M4 15W 35°3000K BBM
P	15.0 W
$\Phi_{\text{Luminaire}}$	900 lm
Luminous efficacy	60.0 lm/W
CCT	3000 K
CRI	90

Description



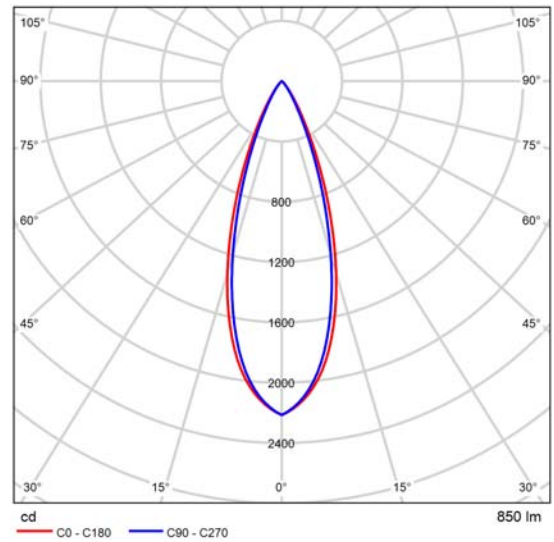
Polar LDC

Product data sheet

NEKO - LED-SpotLight

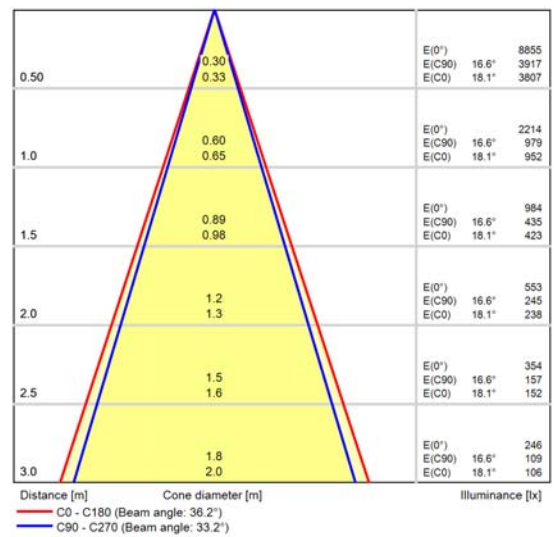


Article No.	MINUX 44 WC 11W 40°3000K
P	11.0 W
Φ _{Luminaire}	850 lm
Luminous efficacy	77.3 lm/W
CCT	3000 K
CRI	90



Polar LDC

Description



Cone diagram

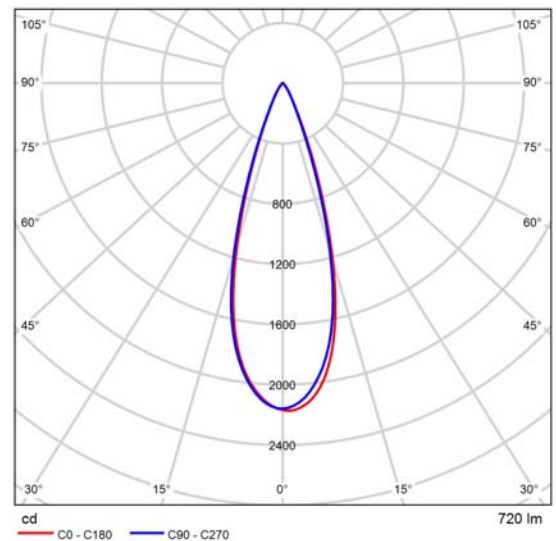
Product data sheet

NEKO - LED-Spotlight



Article No.	MIU-PS WB 11W-3000K/36°930
P	11.0 W
$\Phi_{\text{Luminaire}}$	720 lm
Luminous efficacy	65.5 lm/W
CCT	3000 K
CRI	90

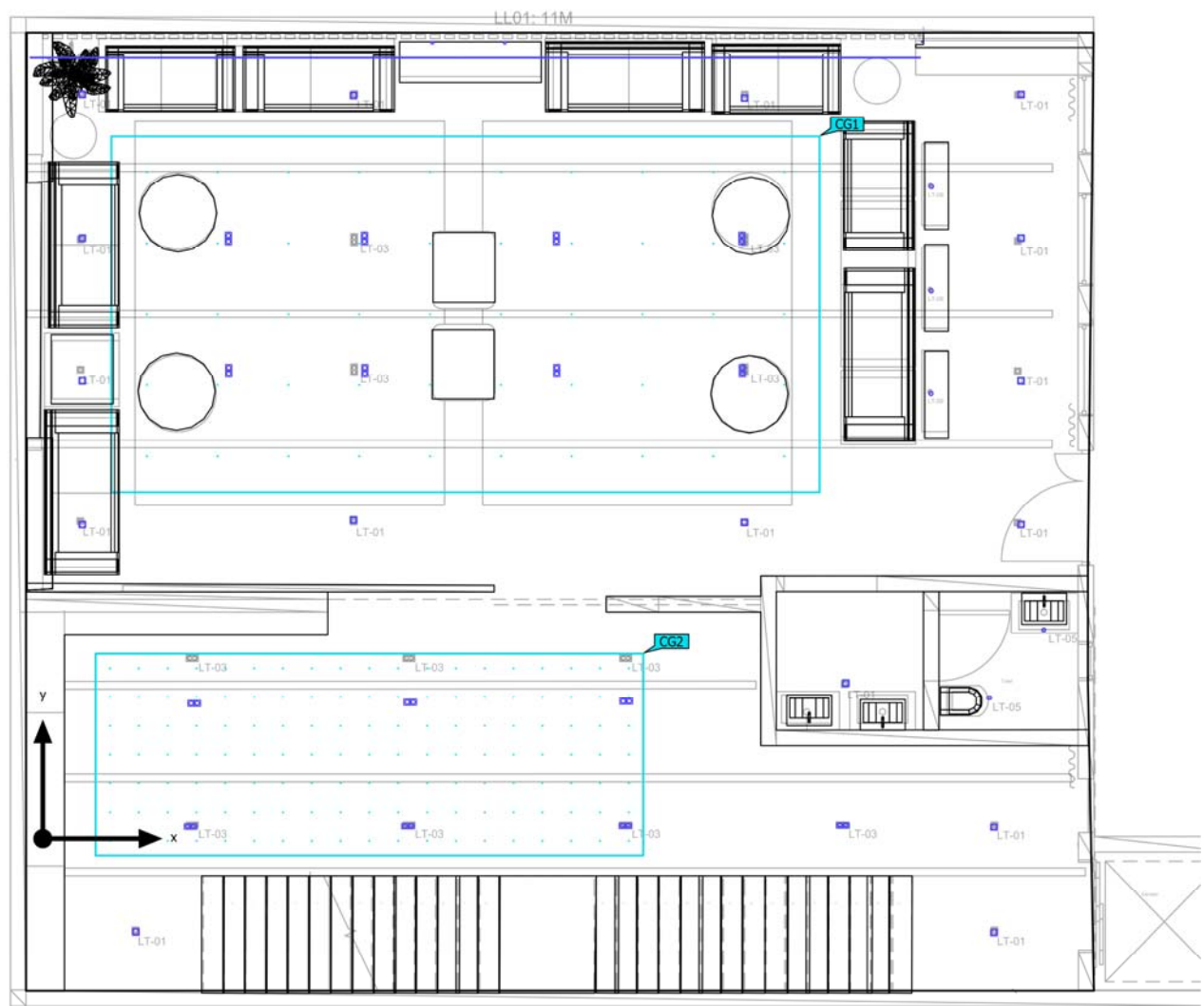
Specification



Polar LDC

Building 1 (Light scene 1)

Summary



Ground area	170.75 m ²		
Reflection factors	Ceiling: 52.1 %, Walls: 46.8 %, Floor: 25.0 %	Clearance height	3.100 m – 3.500 m
Maintenance factor	0.80 (fixed)	Mounting height	0.404 m – 3.294 m

Building 1 (Light scene 1)

Summary

Results

	Symbol	Calculated	Target	Check	Index
Glare valuation ⁽¹⁾	R _{UG, max}	19	≤ 19	✓	
Energy estimation ⁽²⁾	Consumption	2314 kWh/a	max. 6000 kWh/a	✓	
Room	Lighting power density	5.48 W/m ²	–		

(1) Based on a rectangular space of 13.799 m x 12.415 m and SHR of 0.25.

(2) Calculated using DIN:18599-4.

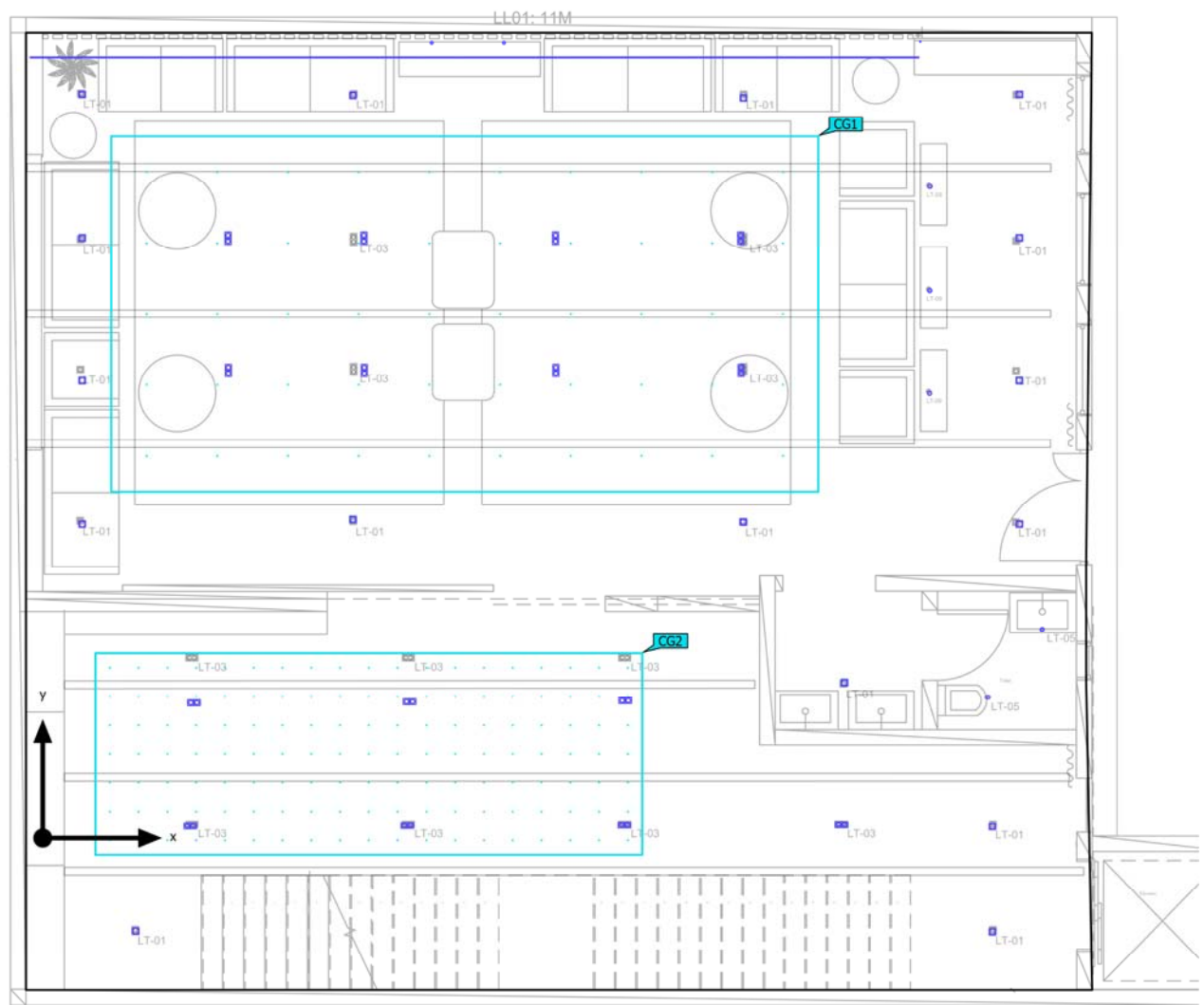
Utilisation profile: DIALux presetting (34.2 Standard (office))

Luminaire list

pcs.	Manufacturer	Article No.	Article name	R _{UG}	P	Φ	Luminous efficacy
16	NEKO	CLUB TSA3 M4 15W 35°3000K BBM	LED-SpotLight	–	15.0 W	900 lm	60.0 lm/W
2	NEKO	LED CLLE 8W-3000K/ 120°	LED-Lamps	–	8.0 W	800 lm	100.0 lm/W
2	NEKO	MINUX 44 WC 11W 40°3000K	LED-SpotLight	16	11.0 W	850 lm	77.3 lm/W
3	NEKO	MIU-PS WB 11W-3000 K/36°930	LED-Spotlight	–	11.0 W	720 lm	65.5 lm/W
29	NEKO	SL2835A/ IP20 6W 500mm 3000K	LED-Lamps	19	6.0 W	550 lm	91.7 lm/W
15	NEKO	TSA1D 2×15W BB 3000K 60°	LED-Multiple DownLight	–	30.0 W	2000 lm	66.7 lm/W

Building 1 (Light scene 1)

Calculation objects



Building 1 (Light scene 1)

Calculation objects

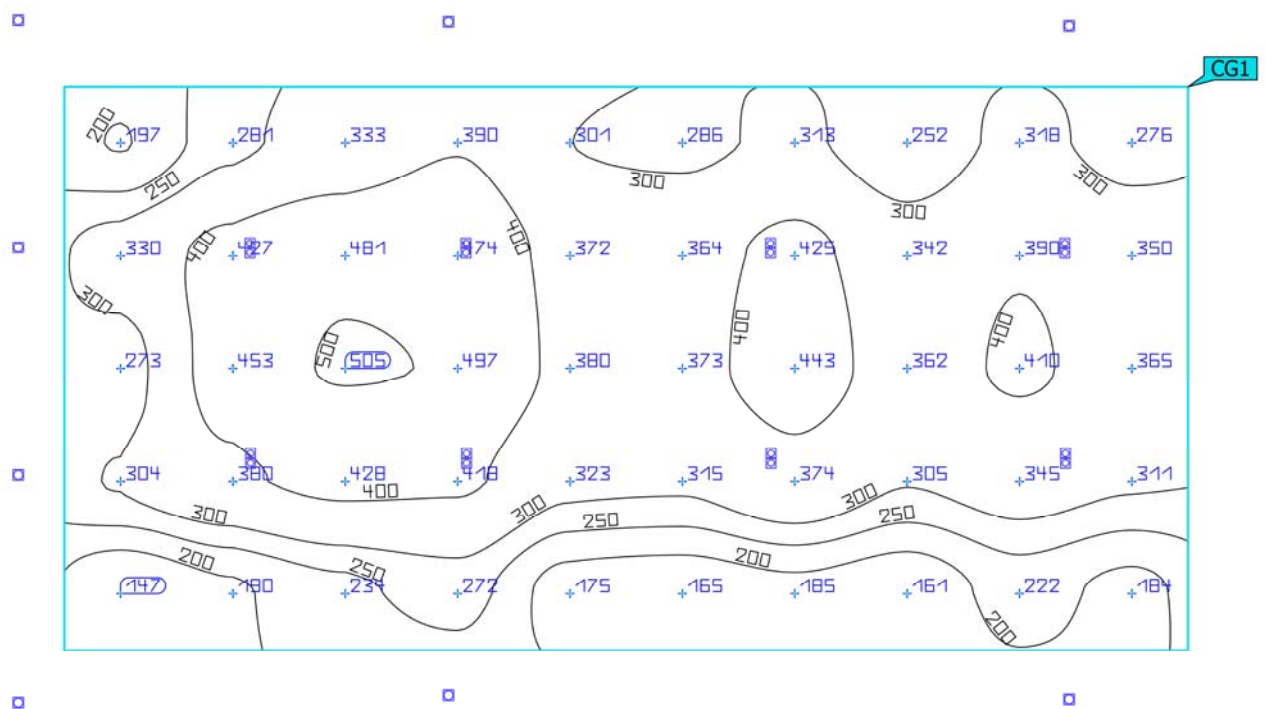
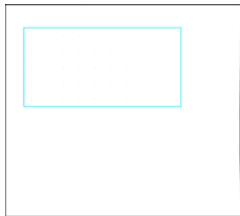
Calculation surfaces

Properties	\bar{E}	E_{min}	E_{max}	$U_o (g_1)$	g_2	Index
LIVING Perpendicular illuminance Height: 0.850 m	328 lx	147 lx	505 lx	0.45	0.29	CG1
STUDY Perpendicular illuminance Height: 0.850 m	318 lx	174 lx	421 lx	0.55	0.41	CG2

Utilisation profile: DIALux presetting (34.2 Standard (office))

Building 1 (Light scene 1)

LIVING

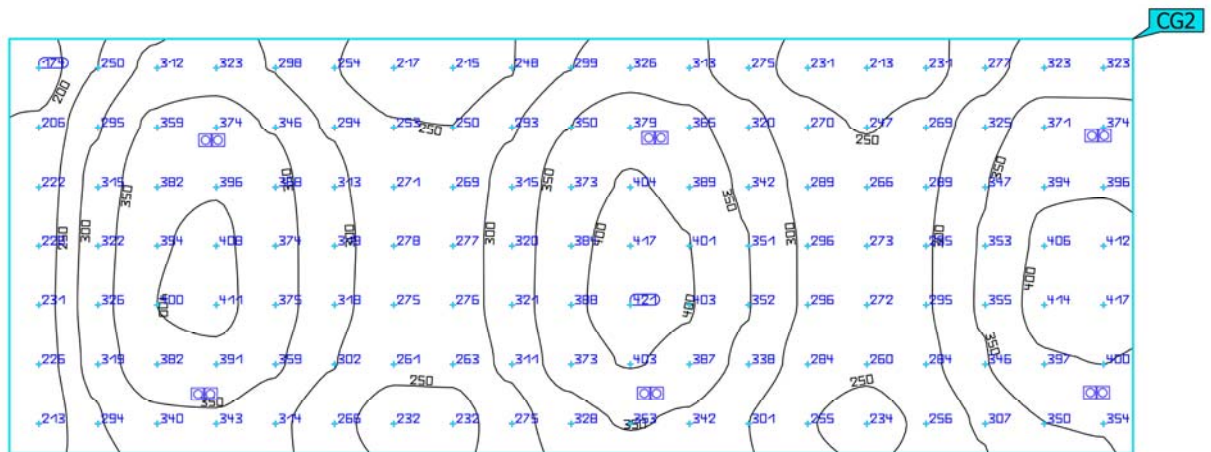


Properties	\bar{E}	E_{min}	E_{max}	$U_o (g_1)$	g_2	Index
LIVING	328 lx	147 lx	505 lx	0.45	0.29	CG1
Perpendicular illuminance						
Height: 0.850 m						

Utilisation profile: DIALux presetting (34.2 Standard (office))

Building 1 (Light scene 1)

STUDY



Properties	\bar{E}	E_{min}	E_{max}	$U_o (g_1)$	g_2	Index
STUDY Perpendicular illuminance Height: 0.850 m	318 lx	174 lx	421 lx	0.55	0.41	CG2

Utilisation profile: DIALux presetting (34.2 Standard (office))